

**TONY
TRIMMER
COM**



**TONY
TRIMMER
COM**

WEBSITE: WWW.TTCREATES.COM
EMAIL: TONY@TONYTRIMMER.COM

TONY TRIMMER COM

CHILDREN'S BOOKS



**TONY
TRIMMER
.COM**

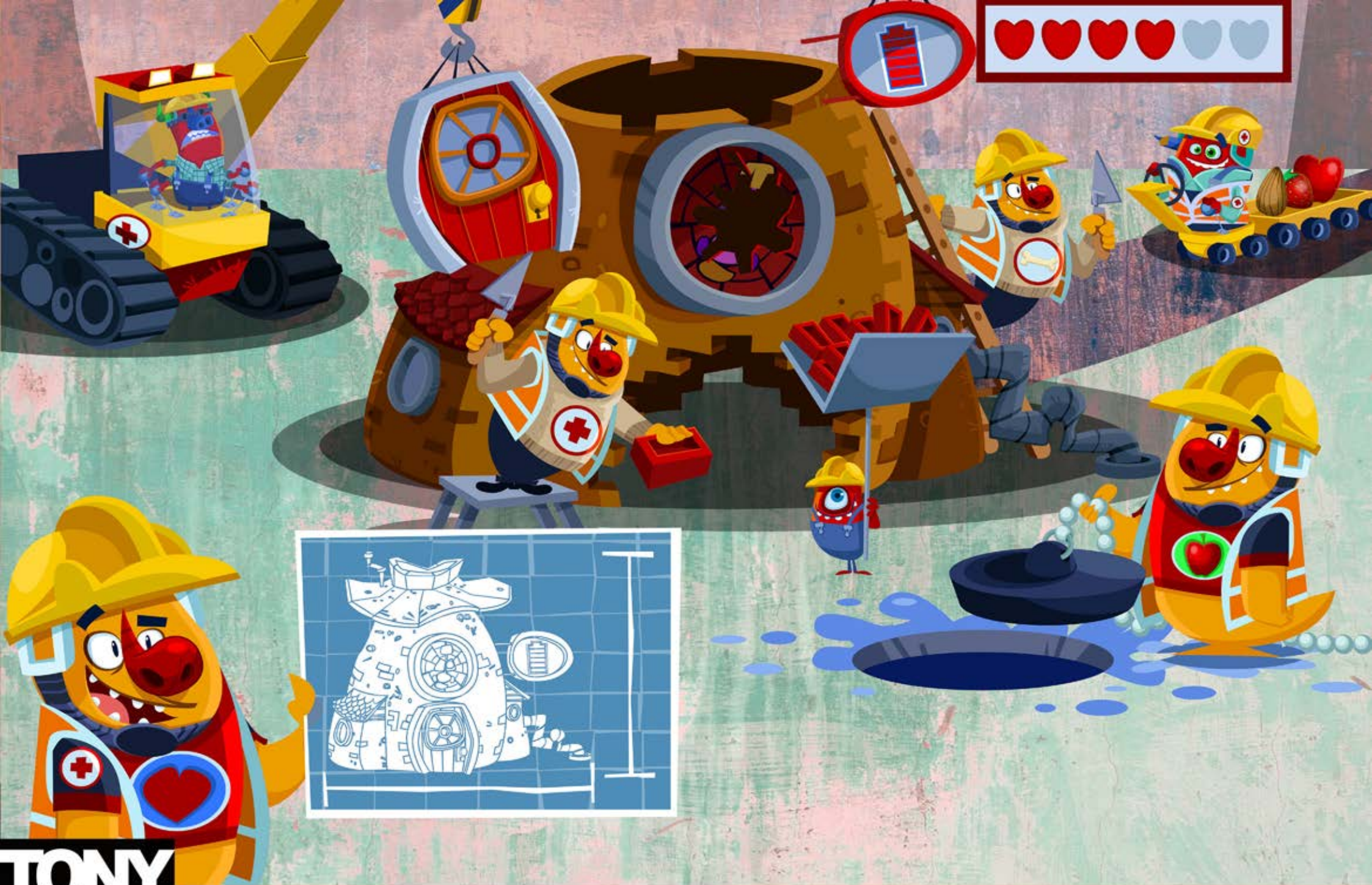
WEBSITE: WWW.TTCREATES.COM
EMAIL: TONY@TONYTRIMMER.COM



THE MONSTERS

**TONY
TRIMMER
.COM**

WEBSITE: WWW.TTCREATES.COM
EMAIL: TONY@TONYTRIMMER.COM



**TONY
TRIMMER
.COM**

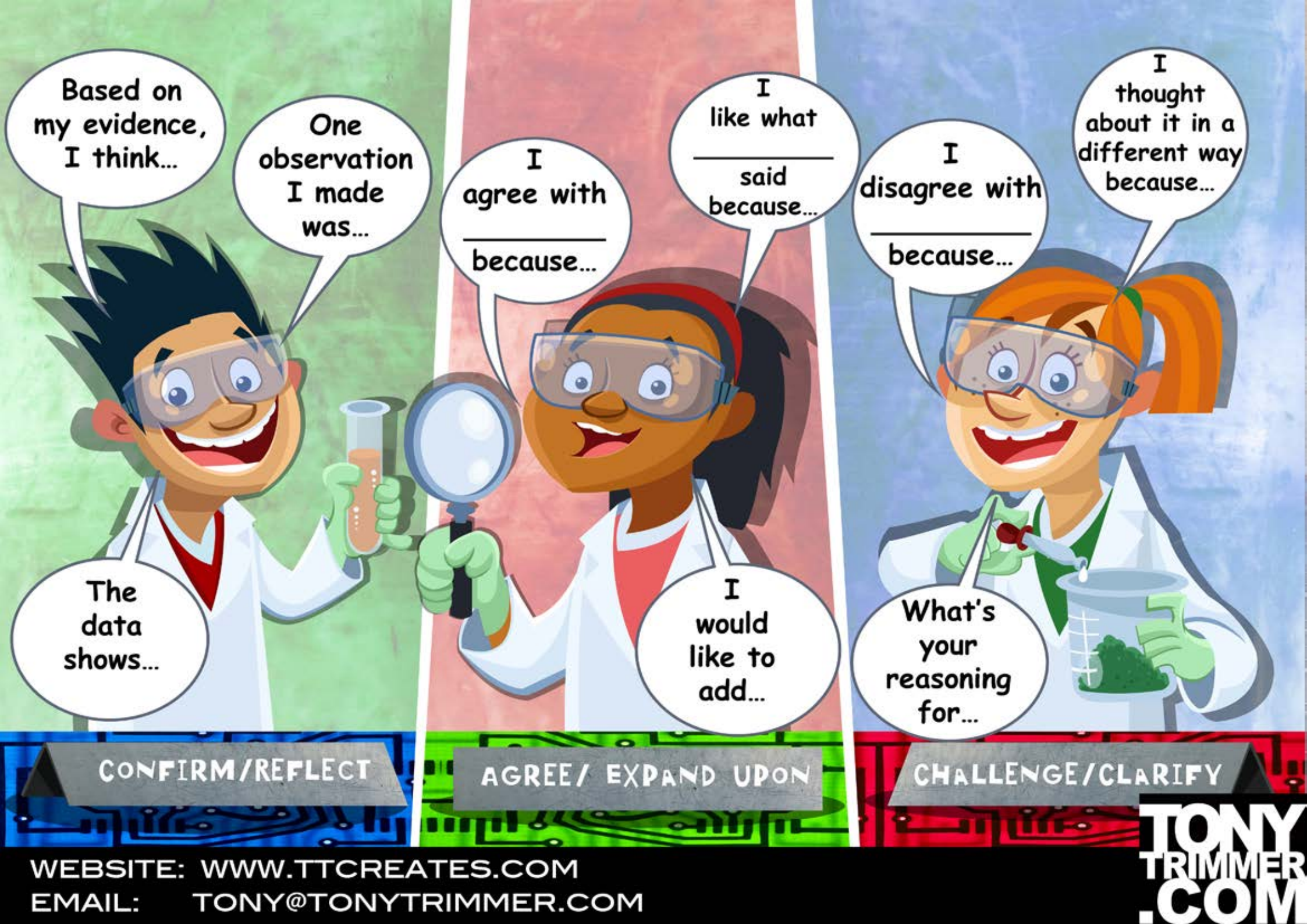
WEBSITE: WWW.TTCREATES.COM
EMAIL: TONY@TONYTRIMMER.COM





**TONY
TRIMMER
.COM**

WEBSITE: WWW.TTCREATES.COM
EMAIL: TONY@TONYTRIMMER.COM



Based on my evidence, I think...

One observation I made was...

The data shows...

CONFIRM/REFLECT

I agree with _____ because...

I like what _____ said because...

I would like to add...

AGREE/ EXPAND UPON

I disagree with _____ because...

I thought about it in a different way because...

What's your reasoning for...

CHALLENGE/CLARIFY





THE MONSTERS

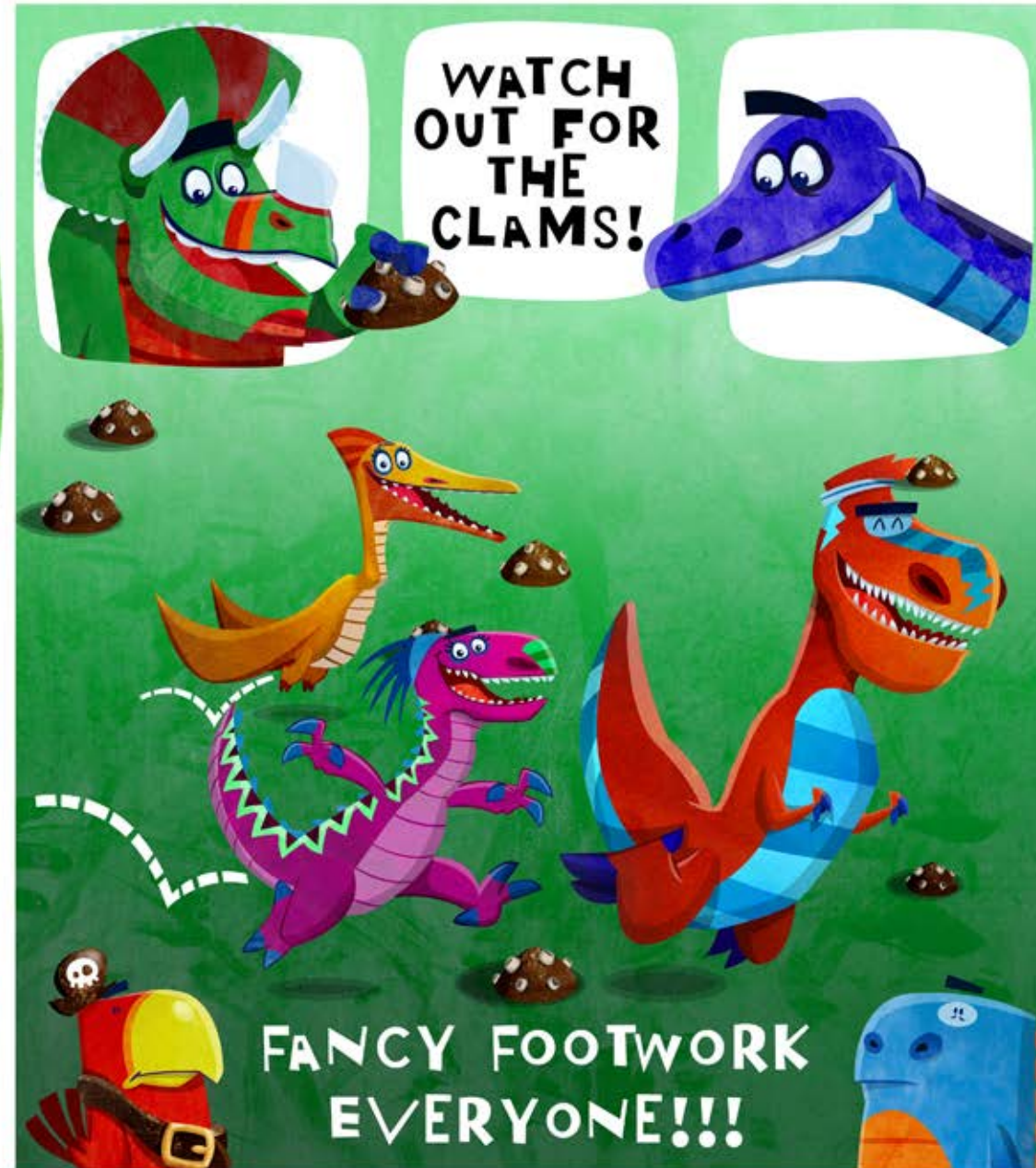
TONY
TRIMMER
COM

WEBSITE: WWW.TTCREATES.COM
EMAIL: TONY@TONYTRIMMER.COM



WEBSITE: WWW.TTCREATES.COM
EMAIL: TONY@TONYTRIMMER.COM

**TONY
TRIMMER
.COM**



WATCH
OUT FOR
THE
CLAMS!

AAAARRRRHHHHH!!!!

OOO!!

FANCY FOOTWORK
EVERYONE!!!

TONY
TRIMMER
COM

WEBSITE: WWW.TTCREATES.COM
EMAIL: TONY@TONYTRIMMER.COM





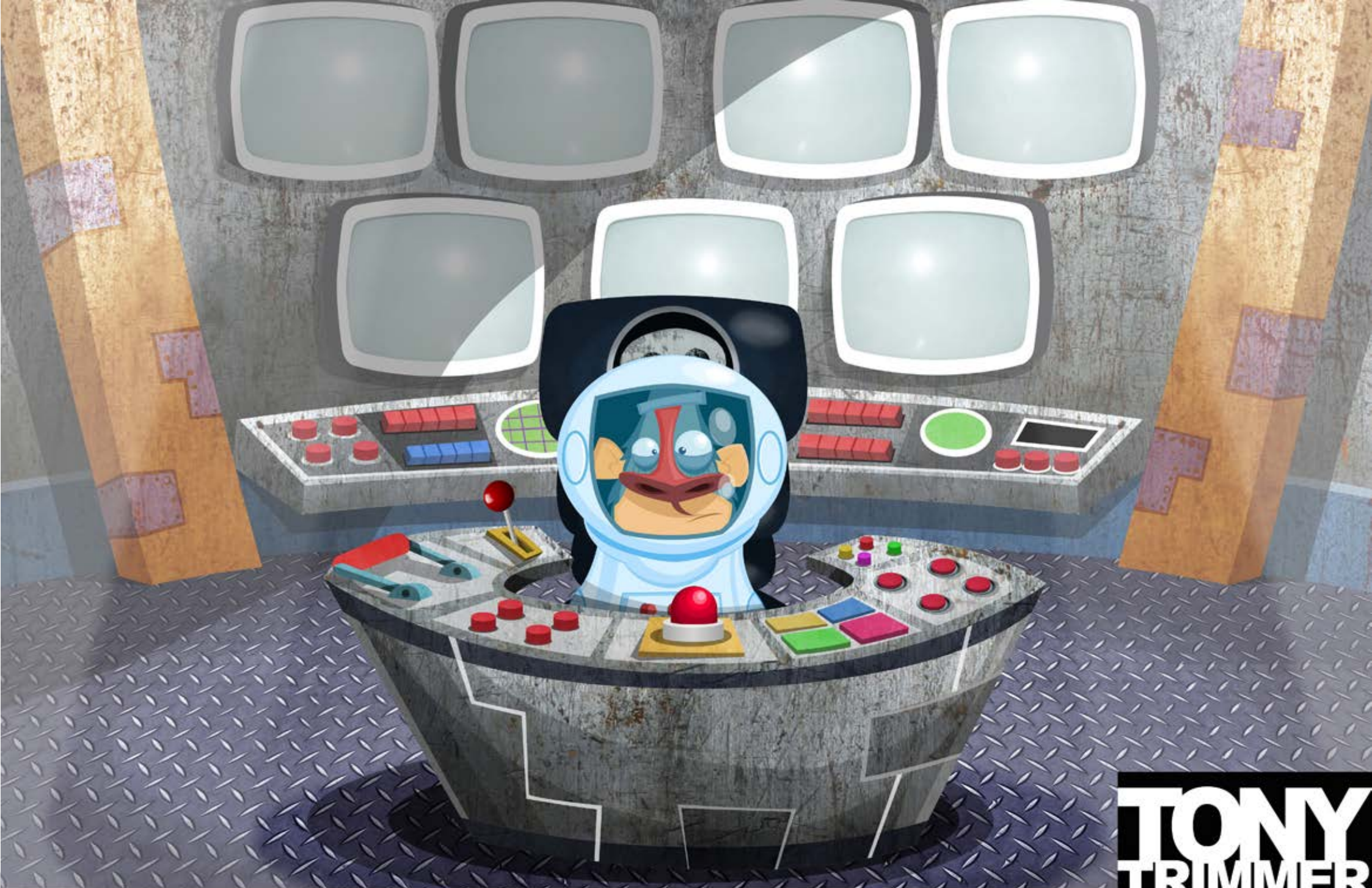


**TONY
TRIMMER
.COM**

WEBSITE: WWW.TTCREATES.COM
EMAIL: TONY@TONYTRIMMER.COM







WEBSITE: WWW.TTCREATES.COM
EMAIL: TONY@TONYTRIMMER.COM

**TONY
TRIMMER
.COM**



**TONY
TRIMMER
.COM**

WEBSITE: WWW.TTCREATES.COM
EMAIL: TONY@TONYTRIMMER.COM



**TONY
TRIMMER
.COM**

WEBSITE: WWW.TTCREATES.COM
EMAIL: TONY@TONYTRIMMER.COM



WEBSITE: WWW.TTCREATES.COM
EMAIL: TONY@TONYTRIMMER.COM

**TONY
TRIMMER
.COM**



WEBSITE: WWW.TTCREATES.COM
EMAIL: TONY@TONYTRIMMER.COM

**TONY
TRIMMER
.COM**



WEBSITE: WWW.TTCREATES.COM
EMAIL: TONY@TONYTRIMMER.COM

**TONY
TRIMMER
.COM**

Prefixes, Suffixes, and Roots.

Prefixes:

are groups of letters added to the beginning of a word to change the meaning of that word.

Prefix	Meaning
re	again
pre	before
mis	bad or badly; wrong or wrongly
anti	against
dis	opposite of

Word Roots:

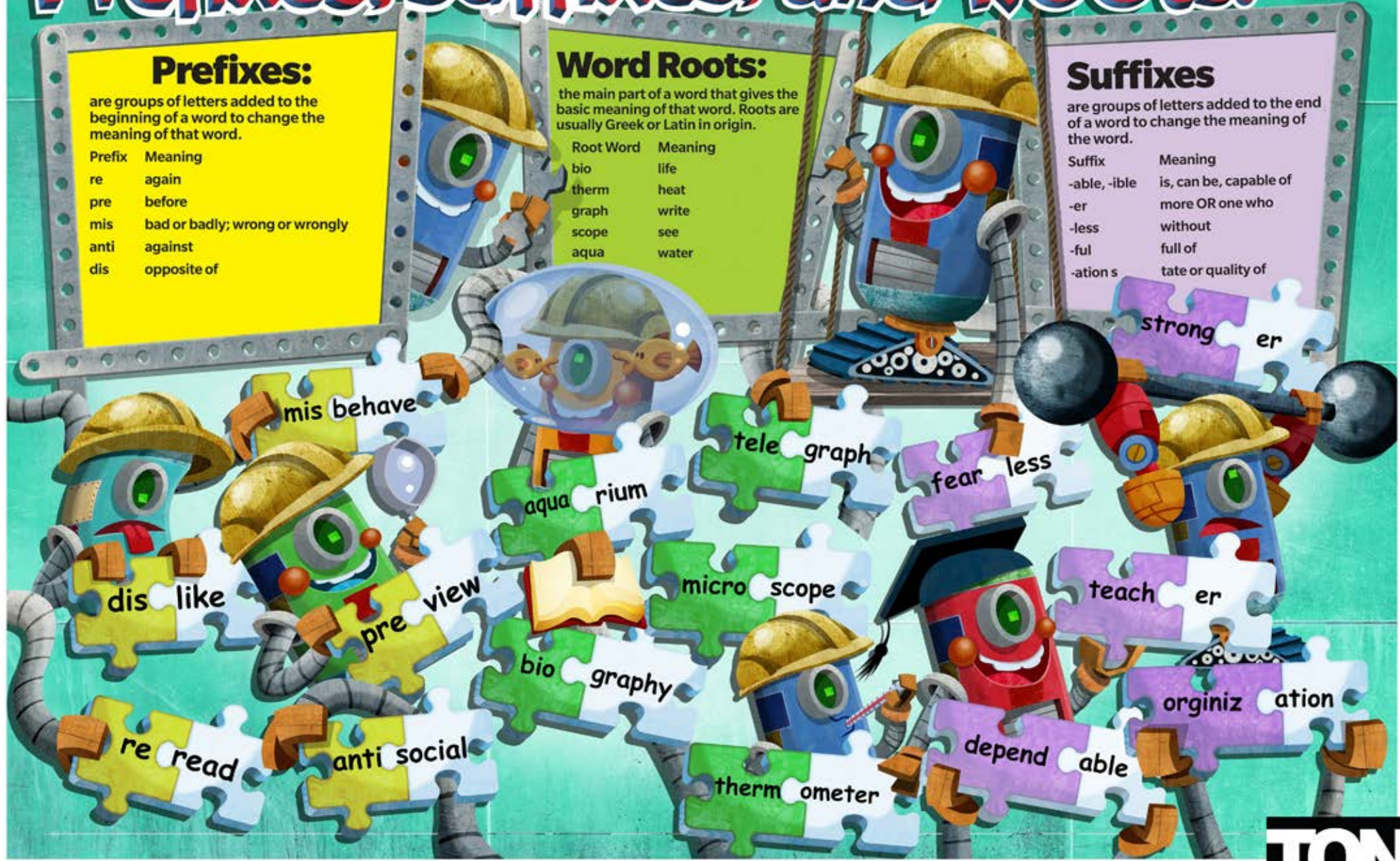
the main part of a word that gives the basic meaning of that word. Roots are usually Greek or Latin in origin.

Root Word	Meaning
bio	life
therm	heat
graph	write
scope	see
aqua	water

Suffixes

are groups of letters added to the end of a word to change the meaning of the word.

Suffix	Meaning
-able, -ible	is, can be, capable of
-er	more OR one who
-less	without
-ful	full of
-ation s	tate or quality of





MY Awesome Dinosaurs



HOW MANY OF EACH ITEM CAN YOU FIND?



